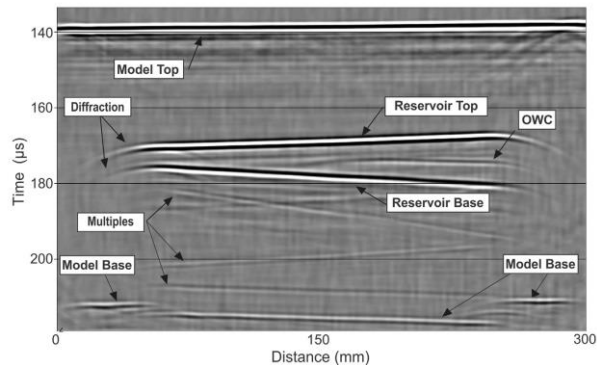


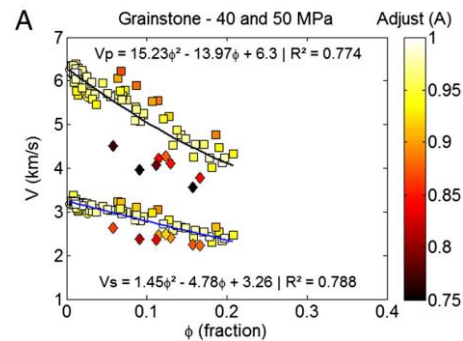
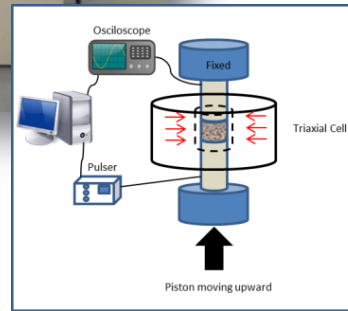
## Facilities

**Seismic Physical Modeling System** – Simulates seismic surveys in reservoir models on lab (ultrasonic scale). Multi-channel. Constant-offset, 2D, 3D and CMP survey modes. Data output in SEG-Y or SU files.



## Facilities

**Rock Physics and Mechanics System (Ergotech)** – Elastic Properties ( $V_p$ ,  $V_{s1}$  &  $V_{s2}$  – Axial & Lateral); Mechanical Properties (Stress x Strain, Compressibility, Creep Tests); Pore Pressure Monitoring; Absolute and two-phase relative permeability; Electrical Resistivity. Triaxial tests at reservoir conditions (up to 69 MPa/150°C). For plugs of  $\varnothing 1.5''$  &  $\varnothing 2''$ .



## Additional Facilities

- X-ray Diffractometer** – Mineral content evaluation;
- X-ray Fluorescence Spectrometer** – Mineral Content Evaluation;
- Permo-porosimeter (Coreval 700/Vinci)** – Simultaneous porosity and permeability measurements at overburden pressure (400-10,000 psi,  $\varnothing 1.5''$ );
- Helium Porosimeter (Ultrapor 300/Temco-Corelab)** – Porosity ( $\varnothing 1''$  &  $1.5''$ );
- Mercury Porosimeter (PoreMaster)** – Porosity, capillary pressure and pore size distribution;
- Gas Permeameter (PERG-200)** – Absolute Permeability ( $\varnothing 1''$ ,  $\varnothing 1.5''$  &  $\varnothing 2''$ );
- Liquid permeability system** - Absolute Permeability ( $\varnothing 1.5''$ );
- Three-phase Relative Permeability System (Vinci)** – Relative permeability for different saturations of gas, oil and water ( $\varnothing 1.5''$ );
- Optical Microscope** – Digital Image Analysis for porosity and pore geometry evaluation;
- Electrical Resistivity Measurement System** – Measures electrical impedance and phase. Confining pressure option (2-electrode). 20Hz – 200KHz. ( $\varnothing 1.5''$ );
- Complex Resistivity System** - Measures electrical impedance and phase at ambient pressure. 4-electrode. 10  $\mu$ Hz - 32 MHz. ( $\varnothing 1.5''$ );
- Ultrasonic Pulser/Receiver (PUNDIT/CNS Farnell)** – Acoustic properties at ambient conditions/54KHz;
- Core Preparation Equipments** – Plugger, Trimmer and Grinder.

